

Luminaire with a higher protection rating - Opal diffuser - direct distribution

Housing made of glass-fibre reinforced polyester, with PUR foam age-resistant sealing in the surrounding edge, stainless steel diffuser clips, device mount made of sheet steel painted white. Housing with increased chemical resistance. Housing colour light grey; Light distribution direct distribution by means of Opal diffuser of acrylic glass, deep-drawn acrylic glass diffuser with an opal smooth surface, UGR (4H/8H) 24.7. With integrated HF motion sensor.. Electrical connection via 5-pole connection terminal with plug-in contacts.. Light Control: netlife easyS9; Regiolux Classification: netlife easy; Control signal: Switch; Number of control gear (max): 4; Communication: Wired; Sensor technology: HF - high frequency; Installation height (min/max): 2m to 4m; Monitoring area: max. D=8m; Optional remote control: 84501101201; Application: Garages, Secondary rooms, Corridors; Function: Motion detection. Swivel mounting bracket SBB to be ordered separately.

## CHARACTERISTICS

Order number	56645024110
EAN number	4020863386062
Commodity code	94051140
Certification mark	IP 65, Protection class I, F, D, HACCP DIN10500/Food/IFS/BRC, Indoor, CE
Impact resistance (IK rating)	IK03 (0°C), IK04 (25°C)
Ambient temperatur	ta 0°C to 25°C
Warranty period	5 years
State funding programs	BEG - Federal funding for efficient buildings (valid only for Germany)

## ELECTRICAL ENGINEERING

Controller	Electronic driver + motion sensor S9 (1 pcs.)
System output	41W
Mains voltage	230V/50Hz
Energy efficiency class/light source	C

## LIGHTING TECHNOLOGY

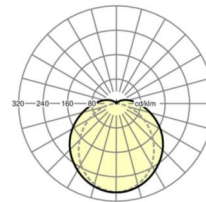
Placement	LED, Colour rendering/Light colour CRI ≥ 80 / 4000K
Colour tolerance (MacAdam)	3SDCM
Photobiological safety (Luminaire)	RG0
Nominal luminous flux	6022lm
LED service life	50000h L80/B10 (Tq 25°C)
Luminaire luminous efficiency	148lm/W
UGR lat./long.	24.7 / 22.0

## MECHANICS

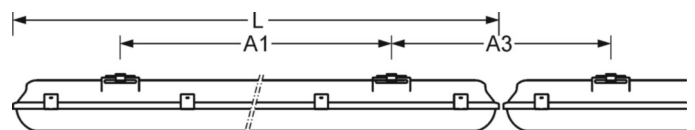
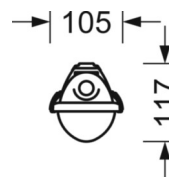
Housing colour	light grey
Dimensions (LxWxH/DxH)	1600mm x 105mm x 117mm
Weight (net)	2.41kg
Cable entry KE (X/Y)	800mm/0mm
Type of installation	Ceiling-mounted single installation, Pendant individual mounting, Wall mounting, Pendulum mounting rail assembly on chain, Ceiling-mounted mounting rail installation

## DEEP-LINK

<https://www.regiolux.de/en/article/56645024110>

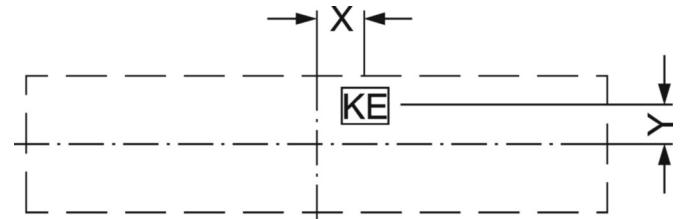


Reference	LED 6000lm 840
ηLB	100 %
Φ ↓/↑	91 % / 9 %
UGR lat./long.	24.7 / 22.0



**Dimensions**

L	1600 mm	Length
B	105 mm	Width
H	117 mm	Height
A1	1000 mm	Mounting distance single mounting
A3	605 mm	Mounting distance between luminaires in a light run arrangement
X	800 mm	Distance cable infeed to the center of the luminaire on the X-axis
Y	0 mm	Distance cable infeed to the center of the luminaire on the Y-axis



## LC SYSTEM

### CHARACTERISTICS

Regiolux Classification	netlife easy
Control signal	Switch
Number of control gear (max)	4
Communication	Wired
Sensor technology	HF - high frequency
Installation height (min/max)	2m to 4m
Optional remote control	84501101201
Application	Garages, Secondary rooms, Corridors
Function	Motion detection

